



**CAL FIRE**

**Office of the State Fire Marshal**

**Community Wildfire Preparedness and Mitigation Webinar Series**

---

**March 27, 2023**

***Pre-Fire Plans***

# Welcome!



- The purpose of this webinar series is to host a live and interactive platform to discuss and educate on Community Wildfire Preparedness and Mitigation (CWPM) fire safety topics directly from our Office of the State Fire Marshal CWPM Staff.
- More information on the webinar series can be found any time at [osfm.fire.ca.gov/wildfire-public-education/](https://osfm.fire.ca.gov/wildfire-public-education/)

If you experience technical difficulties during this presentation, please contact Kara Garrett at (916) 201-5539 or [Kara.Garrett@fire.ca.gov](mailto:Kara.Garrett@fire.ca.gov)



# Pre-Fire Plans

## Speaker Introduction

### Scott Witt

Deputy Chief

Pre-Fire Planning

[scott.witt@fire.ca.gov](mailto:scott.witt@fire.ca.gov)

Resources can be found at:

<https://osfm.fire.ca.gov/divisions/community-wildfire-preparedness-and-mitigation/fire-plan/>



# PRE-FIRE PLANS

**Wildfire & Forest Resilience Action Plan**

**2018 Strategic Fire Plan for CA**

**CAL FIRE Unit Fire Plans**

**Comm. Wildfire Protection Plan (CWPP)**

# **PRE-FIRE PLANS**

## **Wildfire & Forest Resilience Action Plan**

### **2018 Strategic Fire Plan for CA**

### **CAL FIRE Unit Fire Plans**

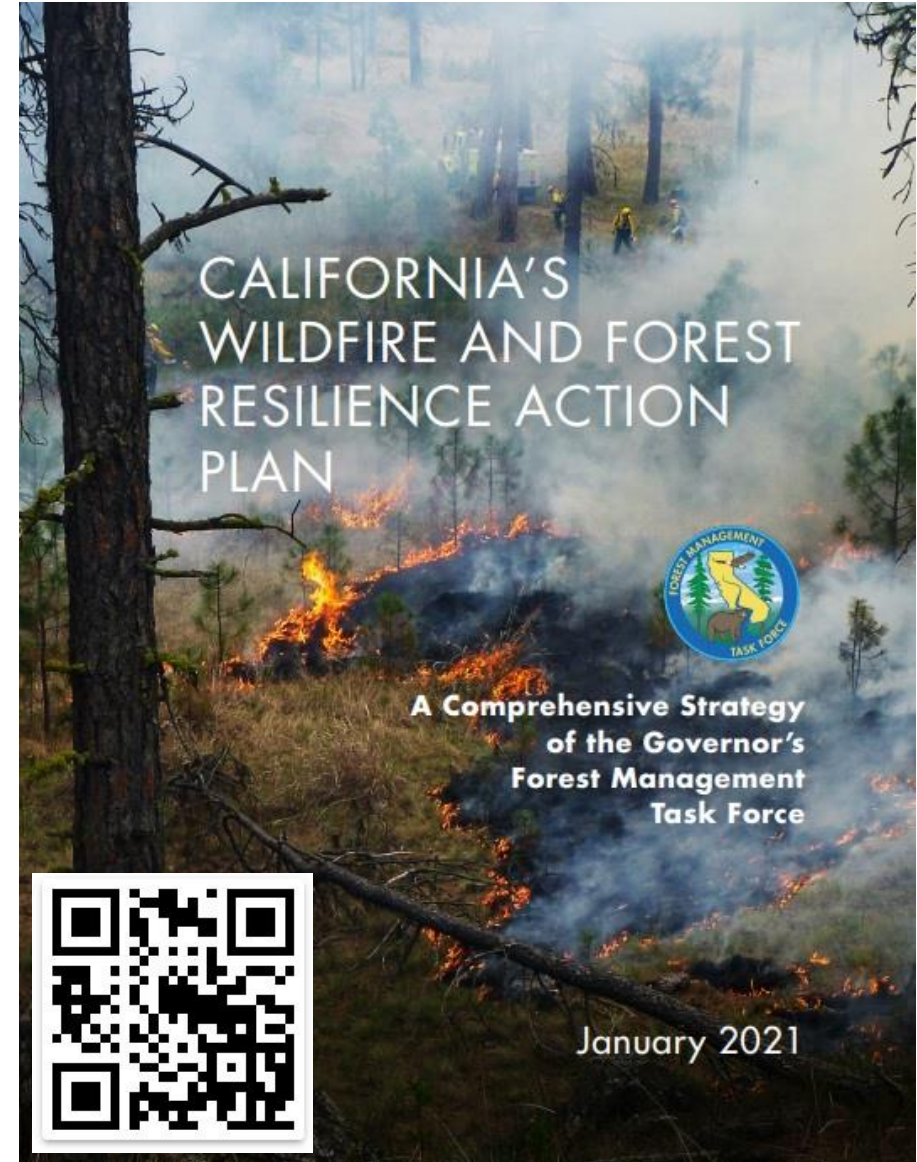
### **Comm. Wildfire Protection Plan (CWPP)**

# Wildfire & Forest Resilience Action Plan

Statewide goals, across State agencies & with Federal cooperation.

The Wildfire and Forest Resilience Action Plan is designed to:

- Restore the health and resilience of California forests, grasslands and natural places;
- Improve the fire safety of our communities;
- Sustain economic vitality of forested areas.



# Wildfire & Forest Resilience Action Plan

- **GOAL 1: INCREASE THE PACE & SCALE OF FOREST HEALTH PROJECTS**
- **GOAL 2: STRENGTHEN PROTECTION OF COMMUNITIES**
- **GOAL 3: MANAGE FORESTS TO ACHIEVE THE STATE'S ECONOMIC & ENVIRONMENTAL GOALS**
- **GOAL 4: DRIVE INNOVATION & MEASURE PROGRESS**

GOAL 1	GOAL 2	GOAL 3	GOAL 4
<b>FOREST HEALTH</b>	<b>COMMUNITY PROTECTION</b>	<b>ALIGN STATE GOALS</b>	<b>INNOVATE &amp; MEASURE PROGRESS</b>
<ul style="list-style-type: none"> <li>&gt; Forest Management</li> <li>&gt; Private Landowners Assistance</li> <li>&gt; State Lands</li> <li>&gt; Prescribed Fire</li> <li>&gt; Workforce Development</li> <li>&gt; Regional Frameworks</li> <li>&gt; Working Forests</li> <li>&gt; Reforestation</li> <li>&gt; Timber Harvest Regulations</li> </ul>	<ul style="list-style-type: none"> <li>&gt; Fire Adapted Communities &amp; Fire-Safe Roadways</li> </ul>	<ul style="list-style-type: none"> <li>&gt; Biodiversity &amp; Climate Goals</li> <li>&gt; Sustainable Wood Products</li> <li>&gt; Workforce Development</li> <li>&gt; Sustainable &amp; Accessible Recreation</li> <li>&gt; Urban &amp; Community Forestry</li> </ul>	<ul style="list-style-type: none"> <li>&gt; Monitoring, Reporting &amp; Assessment</li> <li>&gt; Communications</li> </ul>

**99 key objectives (action items) are being implemented & completed to meet these four goals.**

# **PRE-FIRE PLANS**

**Wildfire & Forest Resilience Action Plan**

**2018 Strategic Fire Plan for CA**

**CAL FIRE Unit Fire Plans**

**Comm. Wildfire Protection Plan (CWPP)**



# 2018 Strategic Fire Plan for California

The Strategic Fire Plan is one of the **Board of Forestry and Fire Protection's** preeminent policies. The Board has adopted these Plans since the 1930s and periodically updates them to reflect current and anticipated needs. The authority comes from Public Resources Code 4130.

## **The 2018 Plan reflects CAL FIRE's focus on:**

- (1) Fire prevention and suppression activities to protect lives, property, & ecosystem services, and
- (2) Natural resource management to maintain the state's forests as a resilient carbon sink to meet California's climate change goals and to serve as important habitat for adaptation and mitigation.

## **2018 STRATEGIC FIRE PLAN FOR CALIFORNIA**

A vision for a natural environment that is more fire resilient; buildings and infrastructure that are more fire resistant; and a society that is more aware of and responsive to the benefits and threats of wildland fire; all achieved through local, state, federal, tribal, and private partnerships.



**STATE BOARD OF FORESTRY AND FIRE  
PROTECTION**

**CALIFORNIA DEPARTMENT OF FORESTRY AND  
FIRE PROTECTION (CAL FIRE)**

August 22, 2018

# 2018 Strategic Fire Plan for California

## EIGHT GOALS

- Each goal listed here is meant to build upon the previous one.
  - Any goals can be worked on at any time based on available funding / opportunity.
1. Identify and evaluate wildland fire hazards & risks.
  2. Promote the local land use planning processes.
  3. Implement local, county & regional plans.
  4. Increase fire prevention awareness, knowledge, and actions.
  5. Integrate fire and fuels management practices with landowners.
  6. Identify, plan, and implement fire prevention.
  7. Determine level of fire suppression resources to protect the assets at risk.
  8. Post-fire assessments and programs.



# **PRE-FIRE PLANS**

**Wildfire & Forest Resilience Action Plan**

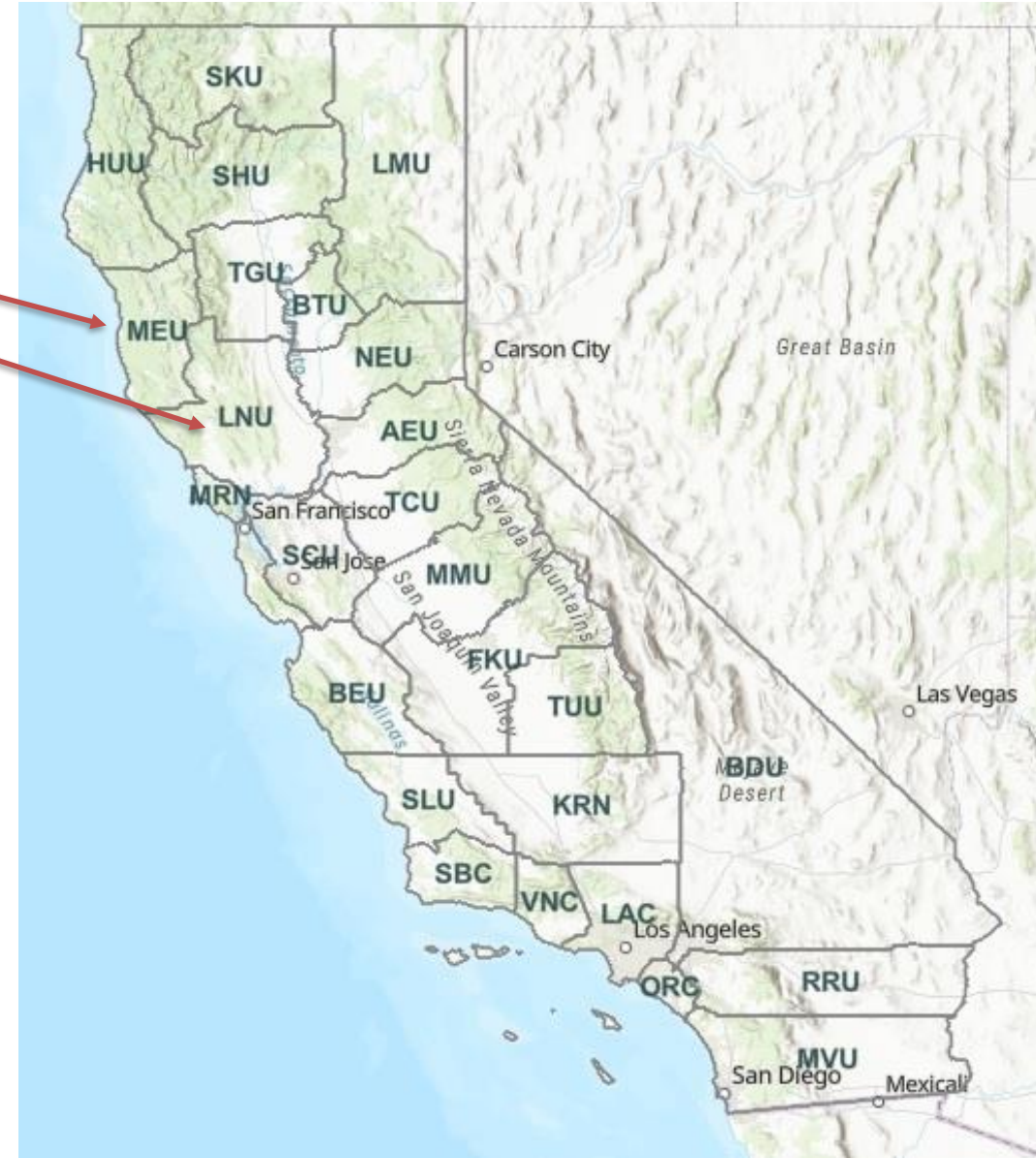
**2018 Strategic Fire Plan for CA**

**CAL FIRE Unit Fire Plans**

**Comm. Wildfire Protection Plan (CWPP)**

# CAL FIRE Unit Fire Plans

- CAL FIRE has 27 “Units”
  - The smallest Units are single counties
  - The largest Units can be 4-6 counties in size
  - Each Unit has many CAL FIRE fire stations
  - Fire engines & crews, dozers, and firefighting aircraft
  - Prevention (which including law enforcement)
- A Unit Fire Plan will review all the previously discussed Pre-Fire Planning documents and analyze how that protect it’s local communities (counties) from wildfire.



# CAL FIRE Unit Fire Plans

Unit Fire Plans are designed to meet CAL FIRES's mission of keeping almost all wildfires small (95% of wildfires less than 10 acres or less in size). Plans are updated annually.

- Unit Fire Plans look back in time
  - Why did fires start, where did they burn, and why did they spread.
- These plans then analyze the current situation
  - Weather/climate, wildland fuels, assets at risk, and the level of service provided to the area.
- Then look into the future
  - Prevention efforts, education, enforcement, wildland fuel treatments, staffing

# CAL FIRE Unit Fire Plans

- CAL FIRE Unit Fire Plans focus down to the “Battalion” level:
  - A Battalion Chief oversees this area
  - Typically half a county in size
  - 2 or 3 CAL FIRE fire stations
  - With three to four fire engines, maybe a dozer
  - Know your local Battalion Chief!
- We’ll next glance at the community of Paradise, located in the Butte CAL FIRE Unit (BTU). Paradise suffered significant damage from the 2018 Camp Fire.

## Unit Fire Plans

[2022 Amador El Dorado Alpine Sacramento Unit Fire Plan \(5432kb PDF\)](#)

[2022 Butte County Unit Fire Plan \(38211kb PDF\)](#)

[2022 Fresno Kings Unit Fire Plan \(36060kb PDF\)](#)

[2022 Humboldt Del Norte Unit Fire Plan \(14573kb PDF\)](#)

[2022 Kern County Unit Fire Plan \(15373kb PDF\)](#)

[2022 Lassen Modoc Plumas Unit Fire Plan \(3445kb PDF\)](#)

[2022 Los Angeles County Unit Fire Plan \(5166kb PDF\)](#)

[2022 Madera Mariposa Merced Unit Fire Plan \(5752kb PDF\)](#)

[2022 Marin County Unit Fire Plan \(10032kb PDF\)](#)

[2022 Mendocino Unit Fire Plan \(3822kb PDF\)](#)

[2022 Nevada Yuba Placer Sierra Sutter Unit F](#)

[2022 Orange County Unit Fire Plan \(33358kt](#)

[2022 Riverside County Unit Fire Plan \(3358k](#)

[2022 San Benito Monterey Unit Fire Plan \(43](#)

[2022 San Bernadino Inyo Mono Unit Fire Plai](#)

[2022 San Diego Imperial Unit Fire Plan \(121k](#)

[2022 San Luis Obispo County Unit Fire Plan](#)

[2022 San Mateo Santa Cruz San Fransisco Unit Fire Plan \(7268kb PDF\)](#)



# Butte County Com Protectio



## FIRE MANAGEMENT STRATEGIES

### A: FIRE PREVENTION

The Butte Unit Fire Prevention Bureau is responsible for investigations, public education, public information, burn permits, life safety inspections, and fire law enforcement. This is an important facet of a well-balanced fire prevention program.

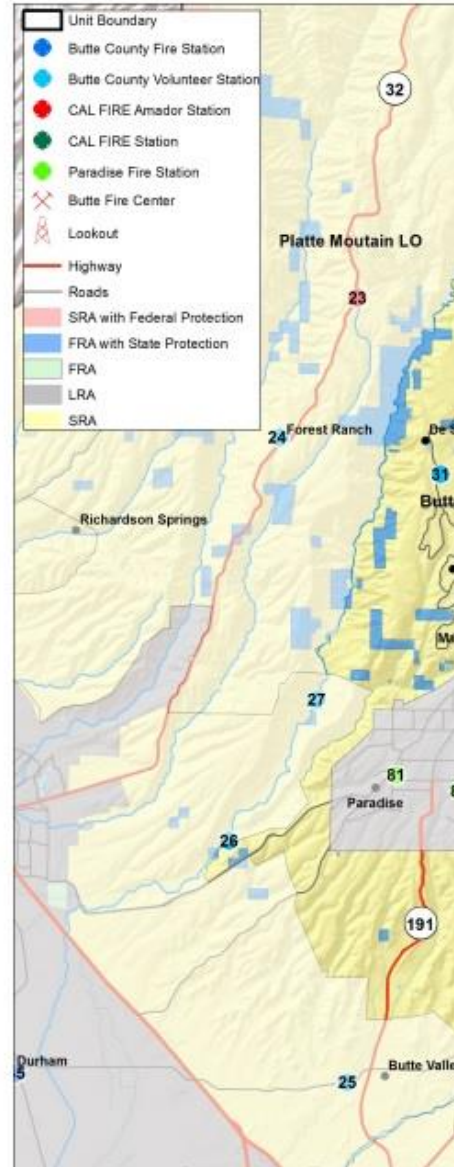
The Fire Prevention Bureau supports the fire investigation process with complex fire investigations such as those involving structures, arson, or detailed follow-up investigative process. Specific fire cause trends can be identified through prevention efforts such as education and enforcement. In the past few years, many wildland fires have been caused by human response, the Fire Prevention Bureau has initiated newspaper articles, Twitter and Facebook regarding



The Fire Prevention Bureau staff has implemented measures to allow their fire to escape control. Responsible individuals with an LE 38, civilly with letter of demand for the fire, and with a citation to the court.

Additionally, with the enhancements of Butte County Ordinance Chapter 38A, unincorporated real property for fire hazards along travel ways, in the 5-foot non-compliance structure regardless of the property line. The goal is to minimize the spread of any fire to other properties, support suppression efforts, increase the opportunity for fire protection in populated areas, and reduce the spread of fire into the wildland. Properties not meeting the fire code

Figure C: Battalion 1



Butte Unit - Battalion 1

## SECTION V: PRE-FIRE MANAGEMENT TACTICS

### CAL FIRE/BUTTE COUNTY FIRE DIVISION/BATTALION/PROGRAM PLANS

**Battalion One** – Paradise, Magalia, Stirling City, Yankee Hill

#### Collaborators

CAL FIRE/Butte County Fire Department; Town of Paradise Fire Department; Butte County; Paradise Ridge Fire Safe Council; Plumas National Forest/Lassen National Forest; Bureau of Land Management (BLM); Sierra Pacific Industries (SPI); Paradise Pines Property Owners Association (PPOA); Pacific Gas & Electric (PG&E); Yankee Hill Fire Safe Council.

#### Wildland Urban Interface Situation

Battalion One surrounds the Town of Paradise, and encompasses three communities: Stirling City, Paradise Pines (Magalia), and Yankee Hill. The Town of Paradise (which is covered in the Battalion 8 section of this plan) and community of Paradise Pines are more characteristic of an urban interface environment where wildland abruptly adjoins higher density housing. Paradise Pines is relatively large and densely populated. Other areas within the battalion can be characterized as intermix areas, where houses are scattered amongst the wildland, such as those south of the Town of Paradise and north and east of the community of Paradise Pines.

The Yankee Hill area is comprised of lands owned by the U.S. Government, Pacific Gas & Electric (PG&E), Sierra Pacific Industries, and local landowners. There is an extensive system of hydroelectric power facilities and transmission lines, a Union Pacific railroad and a State scenic route (Highway 70) in the Feather River Canyon. The Thermalito Irrigation District owns Concow Lake and much of the land surrounding it. The greatest concentration of population is on developed parcels along Highway 70, Concow Lake and the Big Bend area. Many areas have narrow access routes and inadequate defensible space. Another significant problem is the lack of water supply for fire protection with no pressurized community fire hydrants and very few large storage tanks. An evacuation plan and community information radio station have been created in cooperation with the Yankee Hill Fire Safe Council. An extensive network of internet-accessible fire cameras has also been installed in cooperation with the AlertWildfire consortium.

Emergency access in to and out of these communities is a real concern, due to limited, narrow roads and the expectation of large numbers of citizens trying to evacuate simultaneously. This is especially true in Magalia where the population density is very

2021 –

i

Last update: M

# **PRE-FIRE PLANS**

**Wildfire & Forest Resilience Action Plan**

**2018 Strategic Fire Plan for CA**

**CAL FIRE Unit Fire Plans**

**Comm. Wildfire Protection Plan (CWPP)**



# Community Wildfire Protection Plans (CWPPs)

A CWPP, as defined by the 2003 Healthy Forest Restoration Act (HFRA), is a plan for a community that:

1. Is developed collaboratively.
  2. Identifies and prioritizes fuel reduction projects.
  3. Recommends measures to reduce the ignitability of structures.
- A local CWPP is one of the most effective ways to influence where and how State and Federal agencies implement fuel reduction projects.
  - CWPP's are not required by the State or Federal government, but a CWPP development or update process can be leveraged to meet multiple local, tribal, regional, state, and federal priorities and requirements.

# Community Wildfire Protection Plans (CWPPs)

- Who are the collaborators?
  - Local government
  - State (CAL FIRE)
  - Tribal
  - Local fire department
  - Federal land managers
  - Other stakeholders
    - Including NGOs like FSCs
- 3 entities must agree on final content
  - CAL FIRE
  - Local fire department(s)
  - City and/or County Governance

## CERTIFICATION AND AGREEMENT

The Community Wildfire Protection Plan developed for the County of Humboldt:

- Was collaboratively developed. Interested parties and federal land-management agencies managing land in the vicinity of Humboldt County have been consulted.
- Identifies and prioritizes areas for hazardous fuel-reduction treatments and recommends the types and methods of treatment that will protect Humboldt County communities.
- Recommends measures to reduce the ignitability of structures throughout the County of Humboldt.

The following entities attest that the standards listed above have been met and mutually agree with the contents of this Community Wildfire Protection Plan:

  
Chairperson, Rex Bohn  
HUMBOLDT COUNTY BOARD OF SUPERVISORS

  
Chairperson,  
HUMBOLDT COUNTY FIRE SAFE COUNCIL

  
Unit Chief,  
CALIFORNIA DEPARTMENT OF FORESTRY AND FIRE PROTECTION, HUMBOLDT-DEL NORTE UNIT

  
President,  
HUMBOLDT COUNTY FIRE CHIEFS' ASSOCIATION

*This example is from  
the Humboldt - Del  
Norte CAL FIRE Unit  
Fire Plan (2022)*

# Community Wildfire Protection Plans (CWPPs)

- A CWPP may address issues such as
  - Wildfire response
  - Hazard mitigation
  - Community preparedness
  - Structure protection
  - Or all of the above!
- CWPPs must be kept current; generally “fresher” than 5-years due to changes in the landscape across the community (e.g., fuels grow back, population changes, fires...)
- Developing a CWPP Toolkit for plan public creation/accessibility



# Community Wildfire Protection Plans (CWPPs)

## CWPP Eight Steps

### ✓ Step One: Convene Decision Makers

- Form a core team made up of representatives from the appropriate local governments, local fire authority, and state agency responsible for forest management.

### ✓ Step Two: Involve Federal Agencies

- Identify and engage local representatives of the USFS and BLM.
- Contact and involve other land management agencies as appropriate.

### ✓ Step Three: Engage Interested Parties

- Contact and encourage active involvement in plan development from a broad range of interested organizations and stakeholders.

### ✓ Step Four: Establish a Community Base Map

- Work with partners to establish a baseline map of the community that defines the community's WUI and displays inhabited areas at risk, forested areas that contain critical human infrastructure, and forest areas at risk for large-scale fire disturbance.

### ✓ Step Five: Develop a Community Risk Assessment

- Work with partners to develop a community risk assessment that considers fuel hazards; risk of wildfire occurrence; homes, businesses, and essential infrastructure at risk; other community values at risk; and local preparedness capability.
- Rate the level of risk for each factor and incorporate into the base map as appropriate.

# Community Wildfire Protection Plans (CWPPs)

## CWPP Eight Steps (continued):

### ✓ Step Six: Establish Community Priorities and Recommendations

- Use the base map and community risk assessment to facilitate a collaborative community discussion that leads to the identification of local priorities for fuel treatment, reducing structural ignitability, and other issues of interest, such as improving fire response capability.
- Clearly indicate whether priority projects are directly related to protection of communities and essential infrastructure or to reducing wildfire risks to other community values.

### ✓ Step Seven: Develop an Action Plan and Assessment Strategy

- Consider developing a detailed implementation strategy to accompany the CWPP, as well as a monitoring plan that will ensure its long-term success.

### ✓ Step Eight: Finalize Community Wildfire Protection Plan

- Finalize the CWPP and communicate the results to community and key partners.

# PRE-FIRE PLANS

**Wildfire & Forest Resilience Action Plan**

**2018 Strategic Fire Plan for CA**

**CAL FIRE Unit Fire Plans**

**Comm. Wildfire Protection Plan (CWPP)**

# Thank you for attending!

## Questions?

**Scott Witt**

Deputy Chief  
Pre-Fire Planning  
[scott.witt@fire.ca.gov](mailto:scott.witt@fire.ca.gov)

Resources can be found at:

<https://osfm.fire.ca.gov/divisions/community-wildfire-preparedness-and-mitigation/fire-plan/>



# Upcoming Webinars

Webinars held on the 2<sup>nd</sup> and 4<sup>th</sup> Monday of each month at 11:30 AM via Zoom!

- 4/10/2023 – Featuring a Summary of the 2022 fires and the Redbooks.
- 4/24/2023
- 5/8/2023
- 5/22/2023
- 6/12/2023



More information on the webinar series can be found any time at [osfm.fire.ca.gov/wildfire-public-education/](https://osfm.fire.ca.gov/wildfire-public-education/)





# Pre-Fire Plans



end